

## Gliwice, ul. Szara

Localization:  
**Gliwice, Szara**

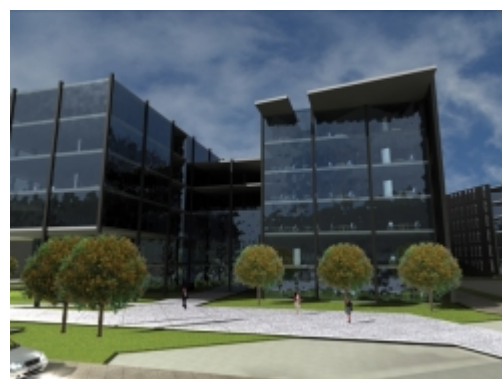
Area:  
**2.5 ha**

Price:  
**On application**

Type:  
**Sale**

Undeveloped land property; the very centre of Gliwice; plot located at the intersection of important Polish and European communications routes: A4 motorway, planned A1 motorway, Silesian Intercity Road (DTŚ road); nearby - Forum Shopping Centre most modern shopping centre of Gliwice - 'Focus Park' is being created in immediate vicinity. Suggested development concepts assumes construction of office, retail and hotel facility. Surface area according to the master plan:

- offices: 55 000 m<sup>2</sup>
- hotel: 7 210 m<sup>2</sup>
- multi-level car park: 16 200 m<sup>2</sup>



All information provided is deemed reliable, but is not guaranteed and should be independently verified. In order to receive details on particular offer please contact us via the following telephone numbers: 32 724 06 07, 501 520 427 or send a query using our contact form.